

Empowering Equity Academy

Women in STEM and Equity

A joint initiative by



European
Investment Bank | Institute



European
Investment Fund



Why are we launching the Empowering Equity Academy?

We want to improve the European Investment landscape and offer real, tangible opportunities to women in STEM & Sustainability areas

The current European venture capital and private equity space is suffering from certain market gaps

Skills are missing

Specifically in the Science, Technology, Engineering and Mathematics areas – as well as Sustainability – we are missing mindsets and skillsets that can really drive the investment space

Diversity is limited

Women are underrepresented in EU private equity, venture capital and private debt markets. It's time to change that.



**Empowering
Equity Academy**
2024 edition

We want to empower women studying STEMs & sustainability subjects to consider entering the equity investment markets. We do this by offering:

- 1 *Real world learning***
We offer a free and specialised course in how Europe's private equity markets work
- 2 *Networking & career opportunities***
We provide a platform for career networking with some of the best fund managers in Europe

What does the Empowering Equity Academy offer me?

Up to 40 spots are available for those studying STEMs and sustainability-related subjects

Learn in September (online)

Attend a fully fledged training programme, covering investment in venture capital and private equity and specific strategies like impact investing.

Meet a wide range of investment professionals from the EIF and deep dive into the investment world.

All lessons will take place online.



“I encourage you to sign up to this opportunity, the equity investment space is where we can truly turn innovation into tangible results for society at large”

Silvia Manca, Head of Competitiveness, Cohesion & Social Impact

Engage in October (onsite)

Participate in the EIF’s flagship event UglyDuck 2024*.

Attended each year by hundreds of high level market players, will get the chance to attend workshops and focus on concrete case studies.

In addition, you will be able to network and meet with industry professionals who are actively recruiting at a job fair.

“Join our programme to connect with like-minded peers, explore new career horizons and apply technical skills towards innovative sustainable solutions. Become part of a vibrant, supportive community!”

Anna Canato, Head of Knowledge & Impact Division, EIBI



* Accommodation, meals and lumpsum are offered.

How do you select participants?

The Empowering Equity Academy is open to both students as well as young professionals covering a range of studies

Type of applicant	Masters Students, PhD candidates & young graduates from European Universities	Young professionals in line with EIF's Early Career Programme* criteria, with up to 2 years of full-time working experience (excluding internships and traineeships)
Field of studies	<p><u>STEM subjects</u></p> <ul style="list-style-type: none"> ● Biomedical Engineering ● Computer Science ● Communication Science ● Artificial Intelligence <p><u>Sustainability subjects</u></p> <ul style="list-style-type: none"> ● Environmental Sciences, Policy, and Management ● Earth Sciences ● Environmental Engineering (and related) 	
Indicative Future job & career prospects	<ul style="list-style-type: none"> ● Green technology and engineering ● environmental science and research ● sustainability consulting ● sustainable finance ● ESG risk management ● sustainable regulation ● sustainable agriculture and food systems ● education and communication 	

* [Our Early Career Programme \(eif.org\)](https://www.eif.org)

How does the selection process work?

Open to EIB Summer School students, EIB Institute Alumni & wide network of European Universities

Before the selection

Universities will:

- Identify relevant profiles
- Promote the opportunity for participation to training in September & Job Fair in October to eligible students
- Promote EIF and EIBI remote info session to be held online for the students early June

Application & selection

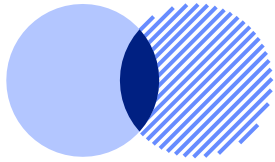
1. Students to send CV + half a page motivation letter to home university
2. Deadline for application by students: **July 10th**
3. Conduct pre-selection of up to 10 students by **July 20th** to be shared with EIBI for final selection by EIB Group.
4. EIBI may reach out to the university or the students in case more information is required.
5. Universities to be notified by the EIBI on the final selection.

Logistics

1. Registration and participation are **free of cost** for students and universities alike.
2. EIB Group shall be responsible to cover accommodation and meals during the students stay in Luxembourg. A lump sum will be offered to cover transport fees (e.g., flights, trains, car)
3. Detailed logistics and content of the programme will be provided by the EIBI once available and upon pre-selection of the students
4. Students will need to participate in **ALL** activities (i.e. training in September and on-site conference and job fair in October)

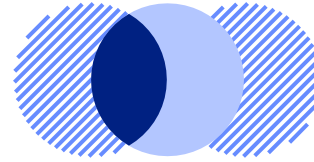
Indicative syllabus (for online learning)

Exact course structure may be subject to adjustments



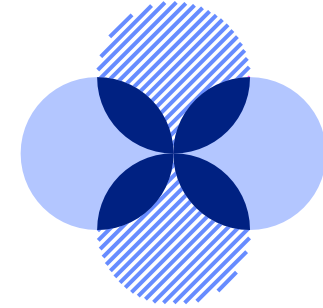
Introduction to equity markets

- The difference between Venture Capital (VC) and Private Equity (PE)
- How does a VC/PE fund work and key features
- Why invest in VC and PE
- Who is the EIB Group and how do they fit into the investment space?



Deep dive on fund structuring

- Typical fund setup
- Life cycle of a fund: from setting up the team to executing an exit strategy
- Aspects of Investment selection
- Investment risks



Measuring impact

- Performance measurements (multiple and IRR)
- Value creation strategies
- Key success factors
- Focus on impact investing as example of investment strategy

We will be using a range of ad hoc case studies to help illustrate real world examples

More info: on site engagement

Ugly Duck: the European Investment Fund's annual venture capital event

The Ugly Duck is EIF's annual venture capital event, which brings together the European VC community for an afternoon of networking, talks and discussion in Luxembourg.

The Ugly Duck community represents European innovation at its best. It stretches across 340 new, emerging and established teams – investing in industries such as cleantech, deep-tech, life sciences and more.

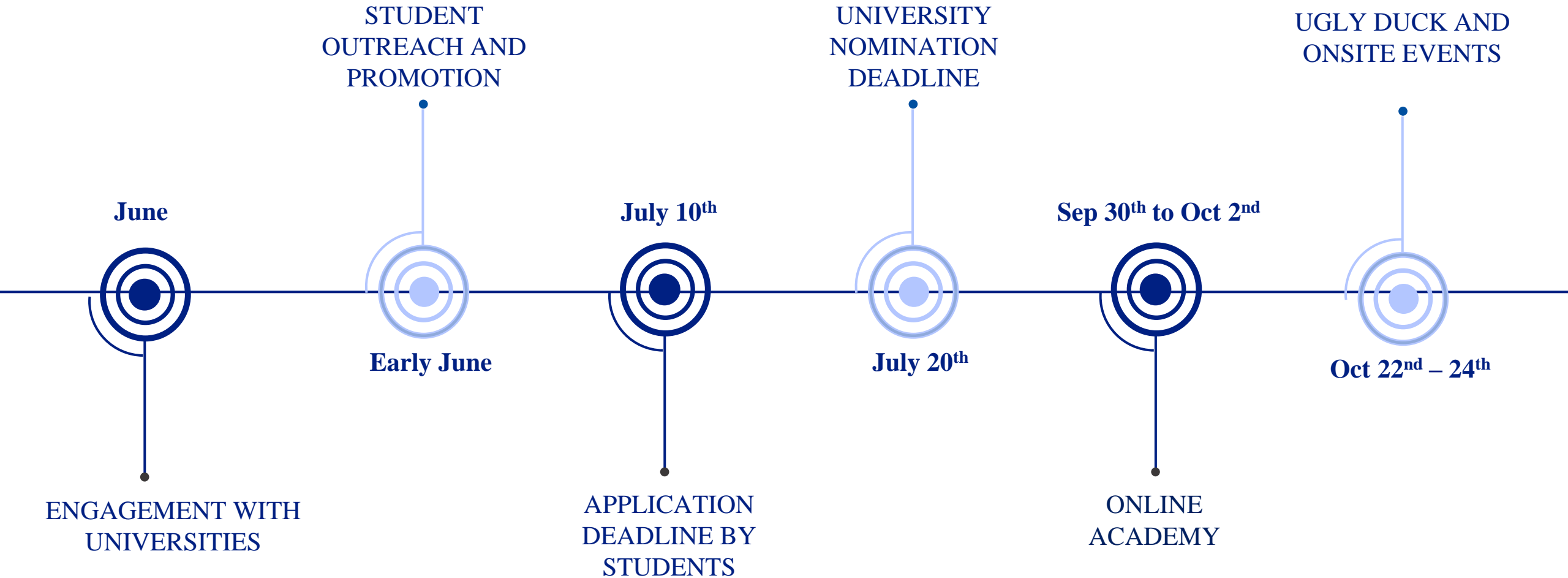
During the annual event, the community is able to discuss latest industry trends, challenges and future optics.

Discover more about Ugly Duck

<https://engage.eif.org/ugly-duck/>



Timeline



Contact information

Ana Stanescu

ana.stanescu@eib.org

+352 4379 83396

